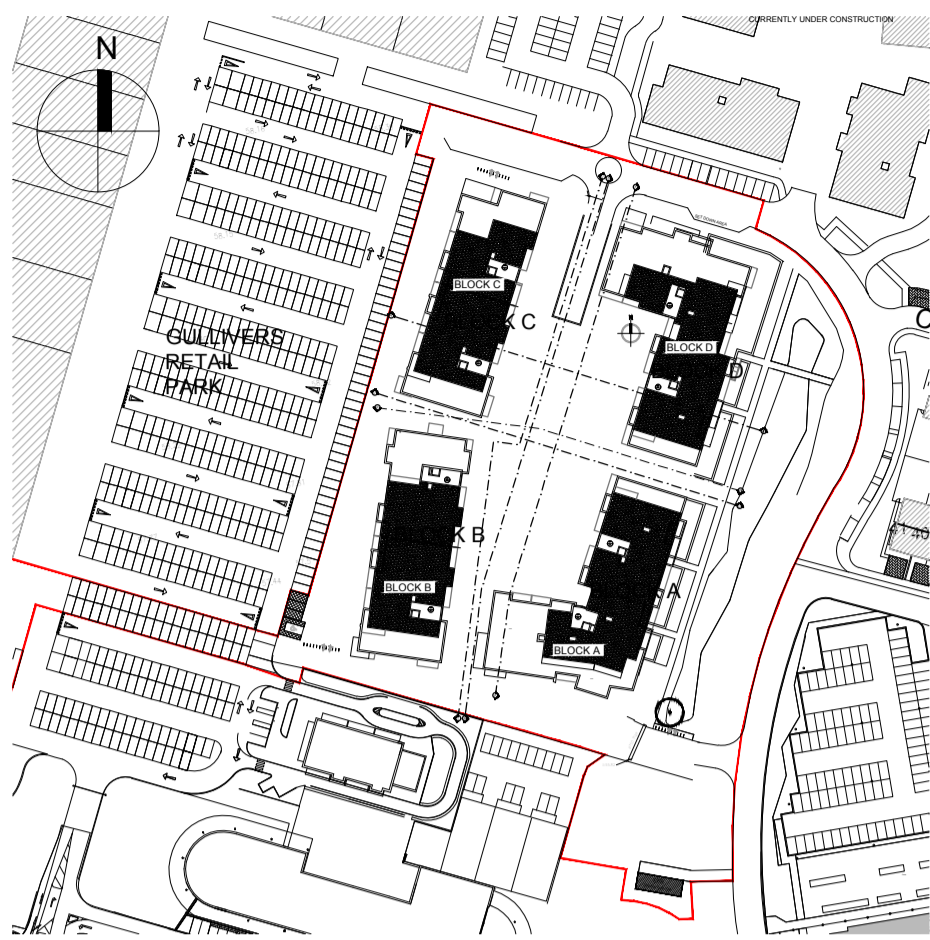


KEY PLAN (NTS)



THIS DRAWING TO BE READ IN CONJUNCTION WITH ARCHITECT'S DRAWINGS, AND CONSULTANT ENGINEER'S DRAWINGS AND SPECIFICATIONS.

REFER TO ARCHITECT'S SITE PLAN FOR SPECIFIC NORTH ORIENTATION.

GENERAL NOTES

THIS DRAWING TO BE READ IN CONJUNCTION WITH ARCHITECT'S DRAWINGS, CONSULTANT ENGINEER'S DRAWINGS AND SPECIFICATIONS & LANDSCAPE ARCHITECT'S DRAWINGS
REFER TO ARCHITECT'S SITE PLAN PL002 and PL003 FOR NORTH ORIENTATION.

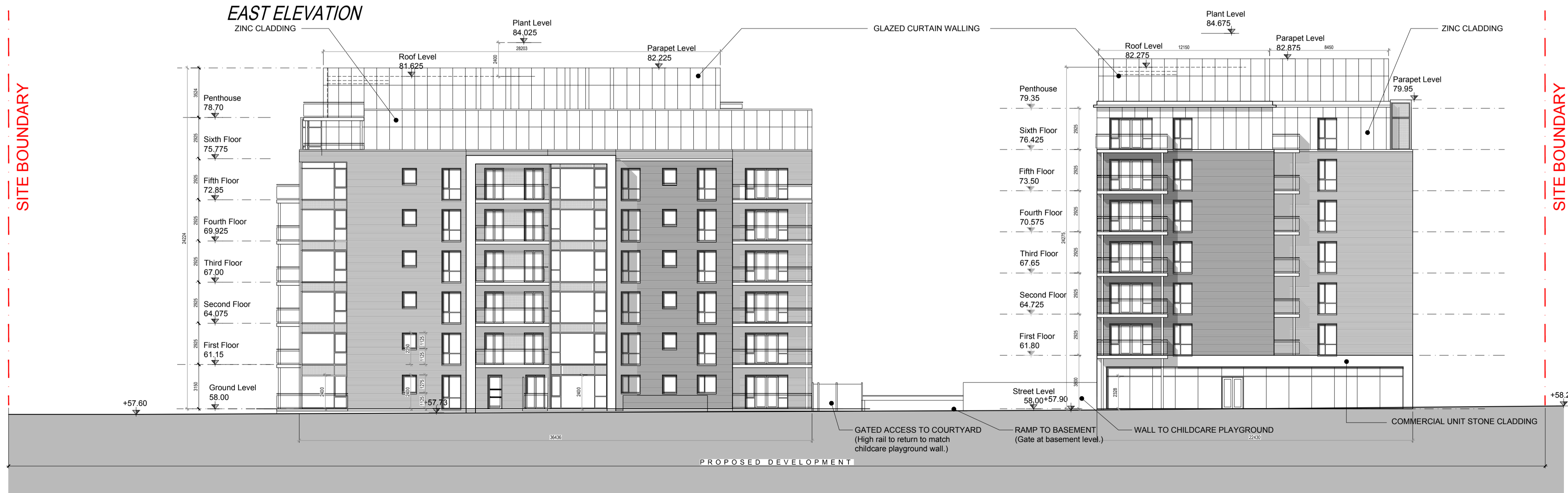
REFER TO SITE LAYOUT PLAN FOR NORTH ORIENTATION
REFER TO CONSULTING ENGINEERS DRAWINGS FOR BLOCK LEVELS

NOTES ON FINISHES:

- ROOF: TO BE FINISHED IN SINGLE PLY MEMBRANE OR SIMILAR APPROVED.
- WALLS: SELECTED CLAY BRICKWORK WHERE INDICATED FEATURE AREAS IN STONE / SELF-COLOURED RENDER / COLOUR COATED METAL.
TOP SET-BACK STOREY FINISHED WITH GLAZED CURTAIN WALLING (ALUMINIUM COLOUR COATED FRAMES) OR ZINC CLADDING AS SHOWN ON ELEVATIONS.
- JOINERY: WINDOWS AND DOORS, FRAMES AND LEAVES, WILL BE COLOURED uPVC (WITH LIMITED AREAS OF COLOUR COATED ALUMINIUM CURTAIN WALLING.)
OBSCURE GLAZING TO BATHROOM / TOILET WINDOWS AND WHERE INDICATED ON GAS.
- RAINWATER GOODS: VISIBLE GUTTERS, DOWNPIPES, AND FIXINGS TO BE uPVC OR ALUMINIUM POWDER COATED TO SELECTED COLOUR.
- BALCONIES: GLAZED BALUSTRADES AND POWDER COATED HANDRAILS / UPRIGHTS.
STEEL OR CONCRETE BALCONY STRUCTURE / FLOORS



EAST ELEVATION



NORTH ELEVATION

NOTES:

DO NOT SCALE FROM DRAWINGS. WORK TO FIGURED DIMENSIONS ONLY. ARCHITECT TO BE NOTIFIED OF ALL DISCREPANCIES.

REVISIONS

DATE	DESCRIPTION	No.

<p>M^COORM M^COORM ARCHITECTS</p>	<p>PROJECT TITLE: Blackwood Square, SHD</p> <p>DRAWING TITLE: Apartment Blocks EAST & NORTH ELEVATIONS</p> <p>1 Grantham Street, Dublin 8, D08 A40Y, Ireland. Tel: 01-4788700 Fax: 01-4788711 E-Mail: arch@mcoorm.com</p>	<p>DATE: Oct'19</p> <p>SCALE: 1:200@A1</p> <p>JOB NO: 14030.7</p>	<p>DRAWN BY: DE</p> <p>REVISION:</p> <p>DRAWING NO: PL16</p>
---	---	--	--